

COURSE TITLE: ADVANCED SCAFFOLDING, TUBE AND FITTING SCAFFOLD
DURATION 10 DAYS

The third course in an overall programme of training for individuals that wish to become qualified Advanced Scaffolders.

AIM To provide training on scaffold structures at an advanced level and ensure participants fully understand their role with regard to NVQ requirements.

Entry Requirements

Candidates must have held a CISRS Scaffolders card for a minimum of 1 year while also gaining site experience.

Contents include:

- Health and Safety awareness, Legislation and Regulations
 - Registration on to the NVQ Level 3 programme
 - Use of Safety Harness whilst scaffolding SG4:10
 - Interpretation of drawings, Temporary Roof Scaffold, Dead Shore, Stairways, Ramps, Cantilever Drop, Tubular Slung, Risk Assessments and Method Statements, Testing of Ties, Tool Box Talks
 - Questionnaire to check knowledge
- Cost £830 Grant £650***

COURSE TITLE: NVQ LEVEL 2 ASSESSMENTS
DURATION 2 DAYS

AIM To assess individual competencies on scaffolding and NVQ Level 2. Assessment of scaffolding ability to meet CISRS requirements.

Entry Requirements

Participants must have completed Touch Screen Health & Safety Test[^] and completed their NVQ Level 2 portfolio before attending the course.

Contents include:

- Assessment of scaffolding ability to meet CISRS requirements
 - Independent Scaffold, Tower Scaffold, Truss-Out Scaffold, Roof Saddle Scaffold
- Cost £260 Grant £500* (on achievement of NVQ Level 2)**

An operative is not considered a CISRS Scaffolder until they have completed Part 1 & Part 2 Scaffolding Training, CISRS Skills Test, NVQ level 2 and H&S Test irrelevant of their time in industry.

[^] Relevant Health and Safety test or equivalent must have been successfully completed within the last two years prior to the training course.

COURSE TITLE: NVQ LEVEL 3 ASSESSMENTS
DURATION 2 DAYS

AIM To assess individual competencies on advanced scaffolding and NVQ Level 3. Assessment of scaffolding ability to meet CISRS requirements.

Entry Requirements

Participants must have completed the touch screen Health & Safety test [^] and completed their NVQ Level 3 portfolio before attending this course.

Contents include

Demonstrate competence on complex overhead, temporary roof, falsework, shoring scaffold and completing documentation required.

Cost £260 Grant £750* (on achievement of NVQ Level 3)

An operative is not considered a CISRS Advanced Scaffolder until they have completed Advanced Scaffolding Training, CISRS Skills Test, NVQ level 3 and H&S Test irrelevant of their time in industry.

Contact **Gillian Watt on 02890 824 205** or gillian.watt@citbcsni.org.uk to make a booking or for further information on scaffolding courses.

Course dates are arranged on demand. All fees must be paid in full before the commencement of training or assessment.

* For details on current grants please refer to Grant Scheme Booklet 2011-2012, or contact Training Operations Support for further information on 02890 825 466



I / we would like to attend:

Course required:

Name (s):

Company:

Address:

Telephone Number: E-mail:

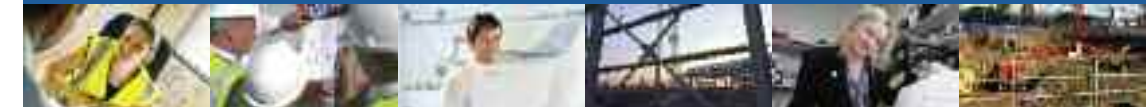


Construction Industry Scaffolders Record Scheme **CISRS**

SCAFFOLDING TRAINING & ASSESSMENT

NEW COURSES AVAILABLE

Venue for all courses
Nutts Corner Training Centre



NEW COURSE

COURSE TITLE: BASIC ACCESS SYSTEMS ERECTOR (BASE) COURSE DURATION 5 DAYS

Kwik-Stage Scaffold or Cuplok Scaffold

A course designed for individuals that are not Scaffolders but who may be required occasionally by their employer to erect and dismantle basic scaffolds up to 6m high around houses in a controlled environment such as a building site.

AIM To provide participants with the knowledge and confidence to erect and dismantle basic scaffolds in a specific system scaffold to a maximum of 6m high.

After successful completion of the course a CISRS Basic card will be issued.

Entry Requirements

Participants on this course must have completed the Touch Screen Health & Safety Test[^]

Contents include:

- Health and Safety Requirements, Legislation and Regulations
- Use of Safety Harness whilst scaffolding SG4:10
- Scaffold components, Foundations, Setting Out and Levelling, Stability of Scaffolds, Access, Working Platforms.
- Erecting and dismantling a basic scaffold structure up to 6m
- Questionnaire to check knowledge.

Cost: £650 Grant: £250*

Please Note: A BASE Card holder is not a qualified scaffolder and as such is prohibited from carrying out any scaffolding operations outside the limitations of the training course.

NEW COURSE

COURSE TITLE: TUBE AND FITTING BASIC SCAFFOLD INSPECTION COURSE DURATION 2 DAYS

AIM To provide information to enable participants to inspect scaffold structures covered on the course.

After successful completion of the course a Basic CISRS Scaffolding Inspection Training Scheme card will be issued.

Entry Requirements

Candidates must have a minimum of six months supervisory experience on site before they can attend this course.

Participants must have completed the Supervisors Touch Screen Health & Safety Test[^]

Contents include:

- Initial Scaffold Inspection, Health and Safety awareness, Legislation and Regulations
- Relevant Industry technical and safety guidance, Correct erection procedures, Reading and interpreting drawings, Identification of scaffold components, Finding Faults, Practical Inspection of Basic Structures and Report Writing Assessment.
- Theory Test

Cost: £280 Grant: £100*

[^] Relevant Health and Safety test or equivalent must have been successfully completed within the last two years prior to the training course.

NEW COURSE

COURSE TITLE: TUBE & FITTING ADVANCED SCAFFOLD INSPECTION COURSE DURATION 2 DAYS

AIM To provide information to enable participants to inspect complex scaffold structures covered on the course.

After successful completion of the course an Advanced CISRS Scaffolding Inspection Training Scheme card will be issued.

Entry Requirements

Candidates must have held the CISRS basic Inspection card for a minimum of two years and completed Supervisors Touch Screen Health and Safety Test[^].

Contents include:

- Initial Scaffold Inspection, Health and Safety awareness, Legislation and Regulations
- Relevant Industry technical and safety guidance, correct erection procedures
- Reading and interpreting drawings, Identification of scaffold components, Finding Faults, Practical Inspection of Advanced Structures and Report Writing Assessment, Testing of ties.
- Theory Test

Cost: £280 Grant: £100*

COURSE TITLE: PART ONE SCAFFOLDING

DURATION 10 DAYS

The first course in an overall programme of training for individuals that wish to become qualified scaffolders. Participants should have six months site experience.

AIM To provide participants with knowledge and confidence to work on scaffolding projects covered on the Part One course.

Entry Requirements

Delegates MUST have six months scaffolding labouring site experience BEFORE they can attend this Scaffolding Part One course.

Contents include:

- Health and Safety awareness, Legislation and Regulations
- Explanation and introduction to NVQs
- Use of Safety Harness whilst scaffolding SG4:10, Interpretation of drawings, Independent Scaffold, Putlog Scaffold, Birdcage Scaffold, Static and Mobile Towers, Alterations to Scaffolds, System Scaffolds, anchor ties.
- Questionnaire to check knowledge

Cost £830 Grant £650*

COURSE TITLE: PART TWO SCAFFOLDING, TUBE AND FITTING ROUTE

DURATION 10 DAYS

AIM The second course in an overall programme of training for individuals that wish to become qualified Tube & Fitting scaffolders. Attended six months following the Part One Course.

To provide participants with knowledge and confidence to work on scaffolding projects covered on the Part Two course.

Entry Requirements

Candidates must have a minimum of six months scaffolding site experience since passing the Scaffolding Part One course.

Contents include:

- Health and Safety awareness, Legislation and Regulations
- Registration on to the NVQ Level 2 programme
- Use of Safety Harness whilst scaffolding SG4:10
- Interpretation of drawings, Bridging Scaffold, Pavement Scaffold, Protection Fans, Truss-out Scaffold, Splay Scaffold, Roof Edge Protection, Roof Saddle Scaffold, Loading Bay, Alterations to Scaffolds, anchor ties.
- Questionnaire to check knowledge

Cost £830 Grant £650*

COURSE TITLE: PART TWO SCAFFOLDING, SPECIFIC SYSTEM SCAFFOLD ROUTE

DURATION 10 DAYS

Kwik-Stage System Scaffolding or Cuplok System Scaffolding

AIM The second course in an overall programme of training for individuals that wish to become qualified System scaffolders. Attended six months following the Part One Course.

To provide training specific to the type of system scaffold being used on site and ensure participants fully understand their role with regard to NVQ Requirements.

Entry Requirements

Candidates must have a minimum of six months scaffolding site experience since passing the Scaffolding Part One course.

Contents include:

- Health and Safety awareness, Legislation and Regulations
- Registration on to the NVQ Level 2 programme
- Use of Safety Harness whilst scaffolding SG4:10
- Interpretation of drawings, Bridging Scaffold, Pavement Scaffold, Protection Fans, Truss-out Scaffold, Splay Scaffold, Roof Edge Protection, Roof Saddle Scaffold, Loading Bay, Alterations to Scaffolds, anchor ties.
- Truss-out Scaffold, Splay Scaffold, Roof Edge Protection, Roof Saddle Scaffold, Loading Bay, Alterations to Scaffolds.
- Questionnaire to check knowledge

Cost £830 Grant £650*